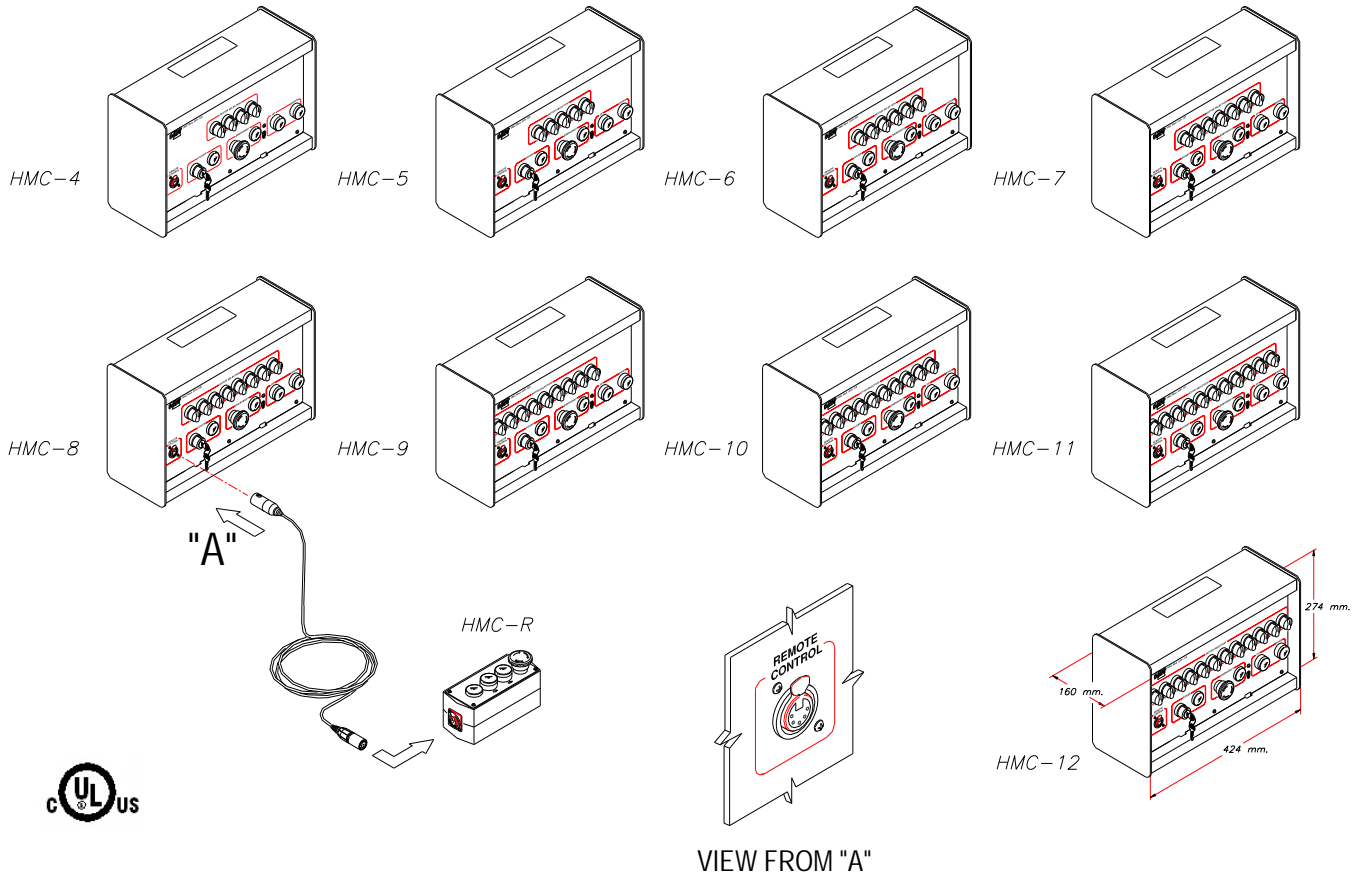




HMC SYSTEM Hoist Manual Control



FEATURES

The *HMC Control System* is a Surface / Wall Mounted enclosure, which contains from **4 to 12 Selector Switches** with **Indicator Lamps** which are used to select the Hoists being Controlled. Once a hoist or group of hoists has been selected, a **Master Up/Down (Dead Man) Push Button** will raise or lower the hoists selected. The System also contains an **On/Off Key Switch** which will disable the entire system when the Key is in the off position. A re-set **Emergency Stop Button** is provided that will trigger a contactor (Supplied by others unless specified as part of the Desisti System) which will trip the breakers feeding the Hoists and thereby shutting down the entire hoist system in case of an emergency .

SYSTEM DESCRIPTION

HMC SYSTEM Wall Mounting Manual Control System: Enclosure Contains:

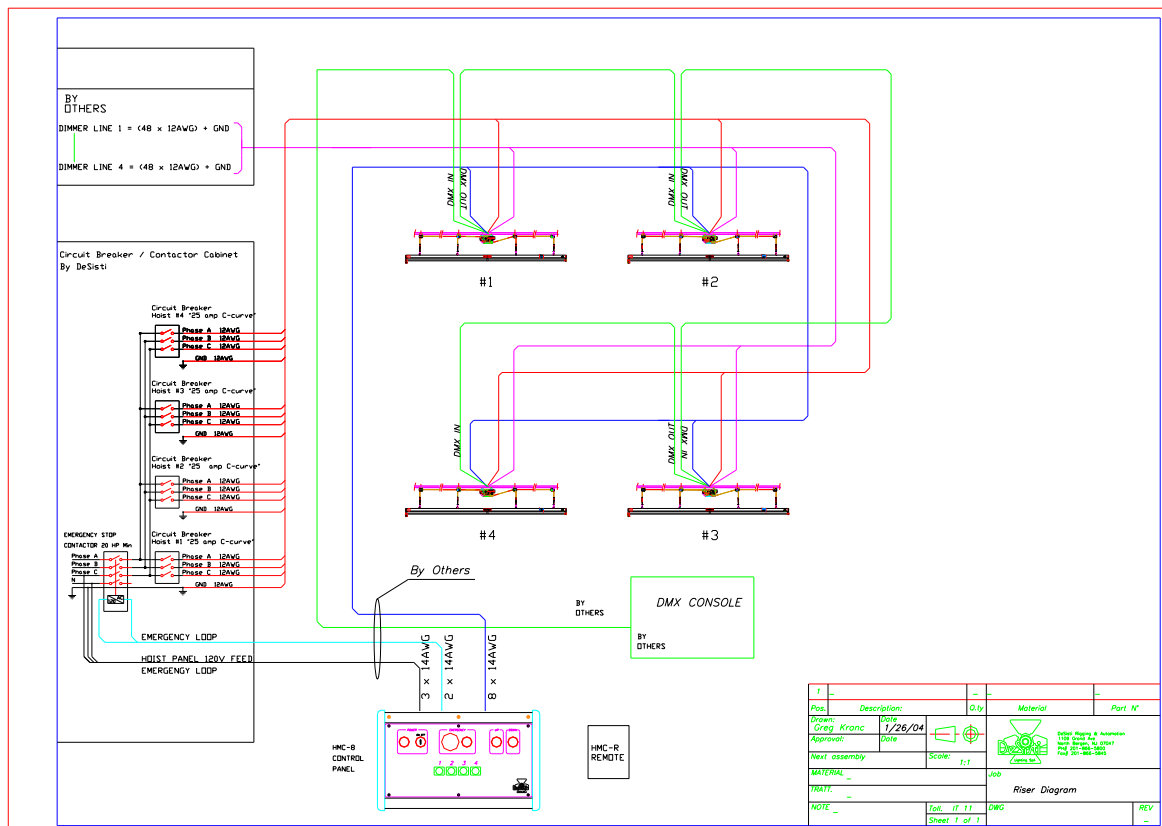
- A Main **ON /OFF KEY SWITCH** with signal lamp to limit the use of the system to authorized personnel.
- An **EMERGENCY STOP BUTTON** which is a re-settable RED BUTTON, to activate a remote 3 phase relay (supplied by others and normally located within the MAINS DISTRIBUTION CABINET), to interrupt the motors feed in case of need.
- From **4 to 12 SELECTOR SWITCHES** associated with the number of channels / motors in the system
- **MASTER UP/DOWN PUSH BUTTON** which controls for movement of selected motors.
- **SELECTOR SWITCHES** with Indicator Lamps.

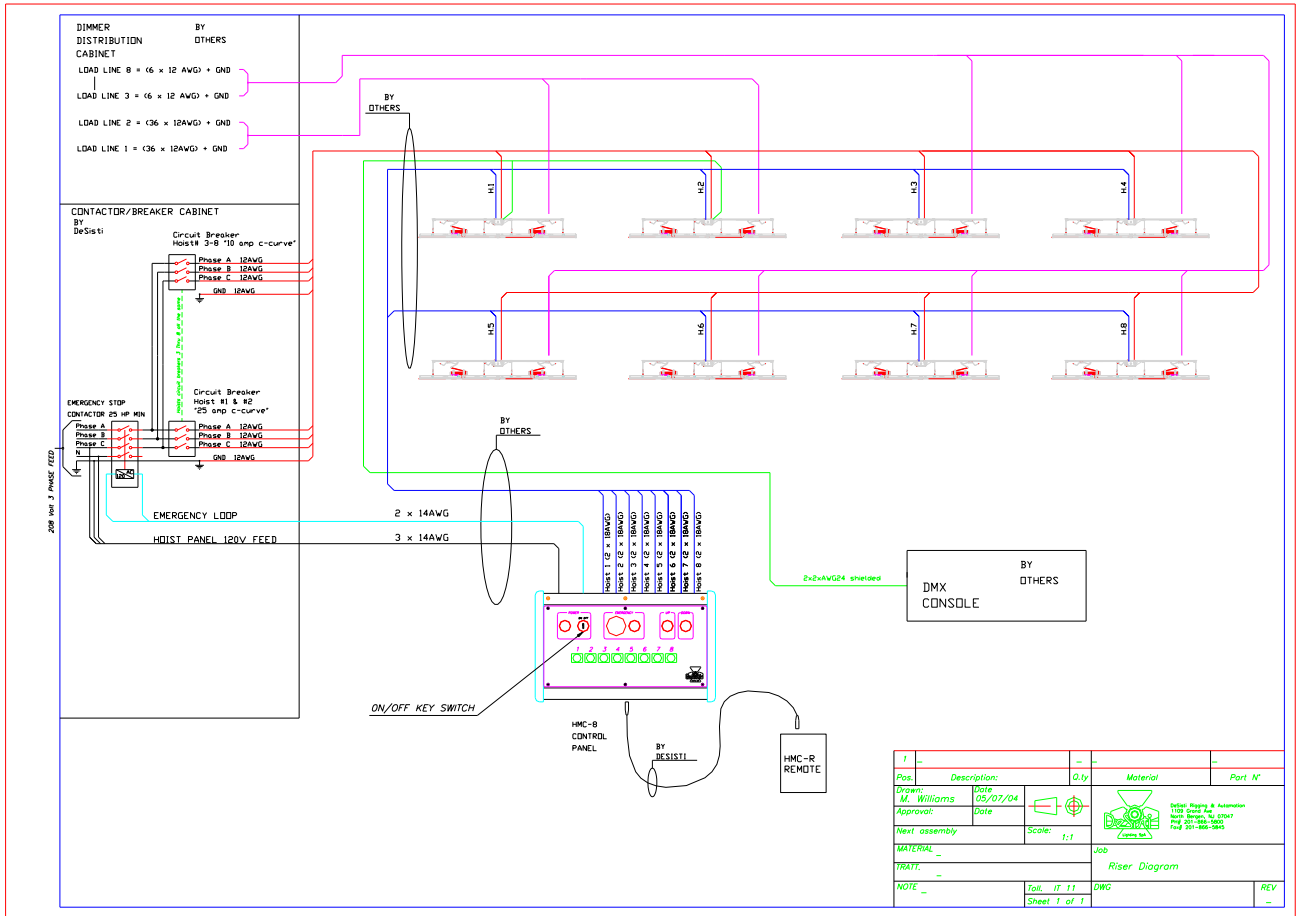
The terminal block for the output wires connections are located inside the wall enclosure that accepts cable entrance from either the top or the bottom.

All control elements are working at low voltage.

Optional Hand Held remote control: available on request to remote the function of the master UP/DOWN control.

TYPICAL HDC RISER DIAGRAM





1	Description	Qty	Material	Part N°
1	100%			
1	M. Williams	05/07/04		
1	Approval	Date		
1	Next assembly	Scale: 1:1		
1	MATERIAL			
1	TRATT.			
1	NOTE	Tab. IT 11	DWG	REV
		Sheet 1 of 1		