



'D' RAIL with TROLLEYS



Mod. 8201



Mod. 8104.105



Mod. 8103.110

The De Sisti 'D' Rail is an extruded aluminum profile featuring a broad range of accessories and offering many standardized solutions to provide a grid, either fixed or with trackable facilities.

Its optimized shape allows many solutions to different applications and wide spans between supports, to minimize the number of hanging points to the ceiling.

Many of the 'D' RAIL' accessories, trolleys and flanges can be used in combination with standard steel 'I' beams available (for instance IPE80) in the market, that are compatible with the 'D' profile bottom flange.

Within the range they are available several types of top attachments, to hang the D Rail under a concrete slab, or an upper I beam/bar joist or an upper pipe grid.

It is possible to have Curved sectors of the D Rail and appropriate trolleys to operate along with it.

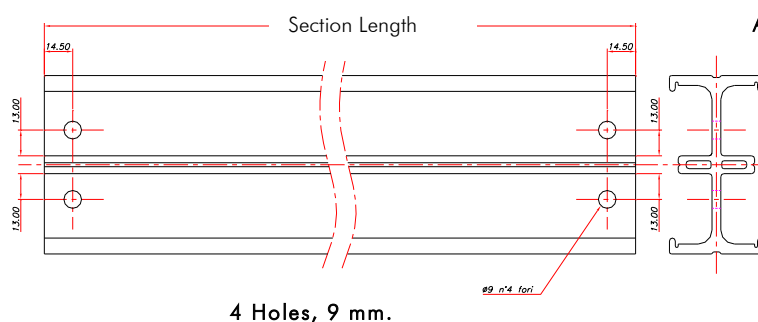
Within the trolleys offered in the program there are manual single or double trolleys and motorized ones, along with a number of other complementary objects like electrical cable carriers or trolleys with hooks for hanging sceneries.

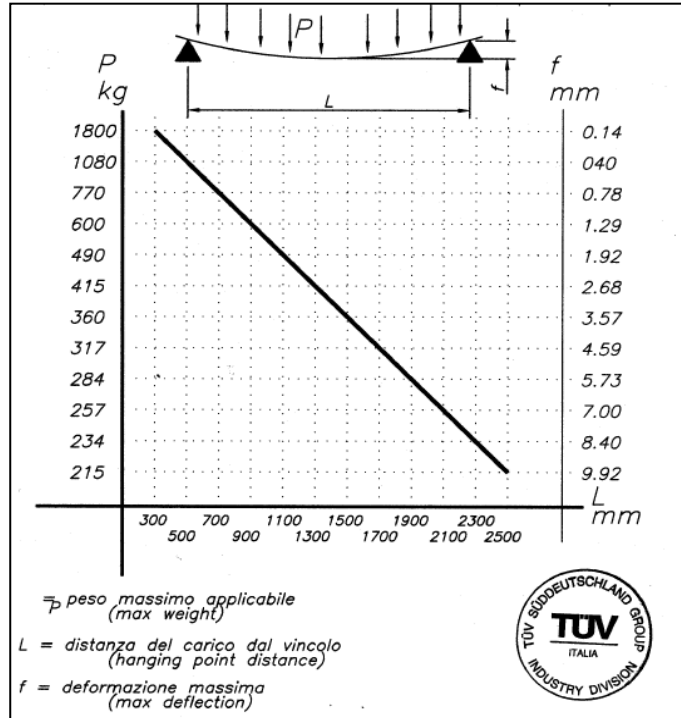
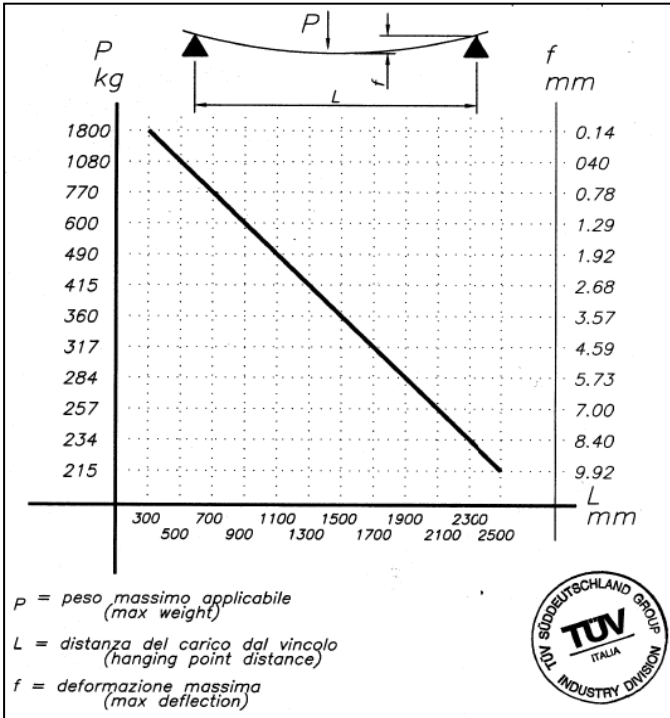
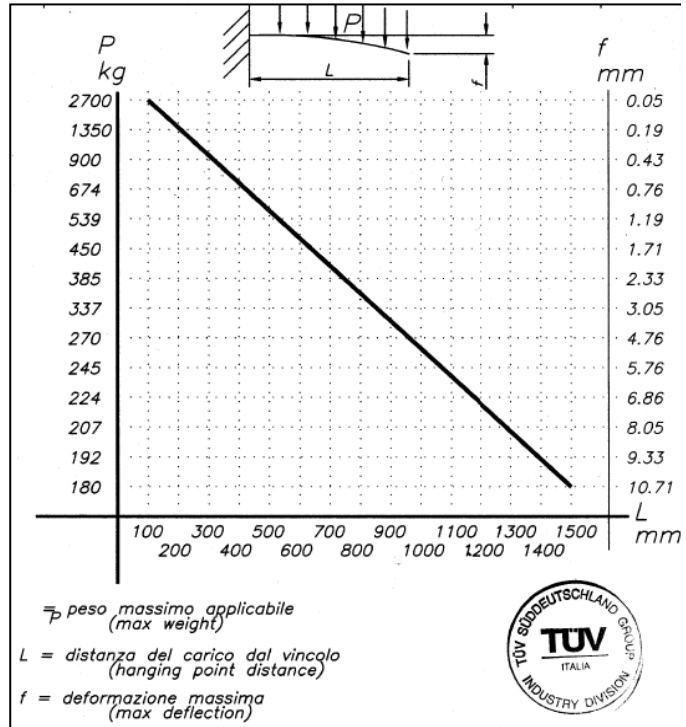
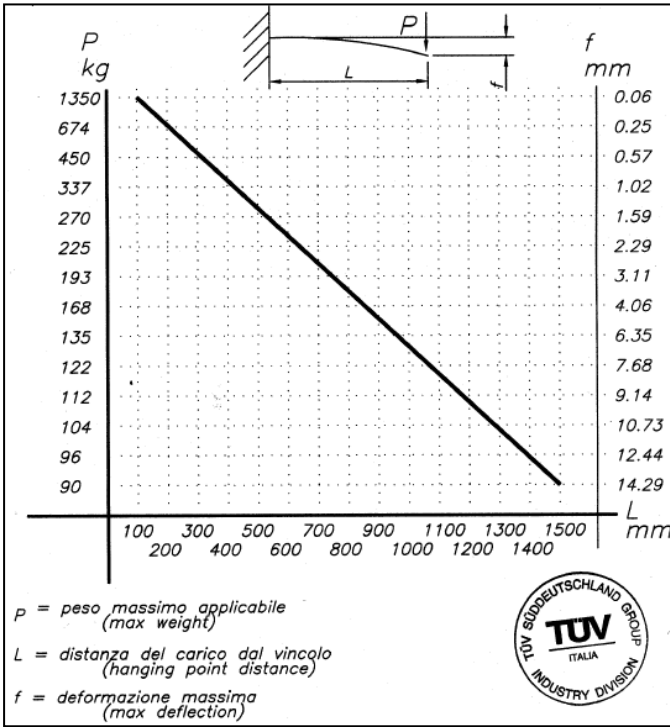
Typically the D RAIL range includes Standard Components that are considered the most frequent solutions for the Studio Grid. Nevertheless in case of requirements that cannot be satisfied by the use of the standard D Rail components, De Sisti Lighting is available to analyse them and offer an appropriate solution.

The "D RAIL" and accessories are Tested and Certified by the TÜV safety authority.



Mod. 8201.101	D" RAIL linear section of 1 meter
Mod. 8201.102	"D" RAIL linear section of 2 meters
Mod. 8201.103	"D" RAIL linear section of 3 meters
Mod. 8201.104	"D" RAIL linear section of 4 meters
Mod. 8201.105	"D" RAIL linear section of 5 meters
Mod. 8201.106	"D" RAIL linear section of 6 meters







Sede
I-20092 Cinisello Balsamo (MI)
via Bettola 32

Tel.: +39 02 66053.1
Fax: +39 02 66012802
Internet: www.tuv.it

TUV ITALIA S.R.L.
Società del Gruppo
TUV Söddeutschland
Administratore Delegato:
Roberto Mejocchi

Sede legale:
Via Bettola 32
20092 Cinisello Balsamo (MI)

Capitale sociale € 438.000
interamente versato

Cod. Fisc. 0892290155
P. IVA 02055510966

Registro delle imprese di Milano
(Trib. Monza) No. 273786
R.E.A. 1255140



**Rapporto di verifica di conformità di
"Manual/Motorized Trolley Model 8103.1"**

**Bericht über die Konformitätprüfung von
"Manual/Motorized Trolley Model 8103.1"**

Nr. Report/Berichtsnummer:
TR CV004/03

Richiedente/Antragsteller:
DE SISTI LIGHTNING S.p.A.
Via Cancelleria, 10A CECCHINA
00040 ALBANO LAZIALE (ROMA)
ITALY

Costruttore/Hersteller:
DE SISTI LIGHTNING S.p.A.
Via Cancelleria, 10A CECCHINA
00040 ALBANO LAZIALE (ROMA)
ITALY

Numero ordine/unsere Auftragsnummer:
135563

Oggetto della prova/Prüfgegenstand:
Manual/Motorized Trolley Model 8103.1

Verifica/Prüfauftrag/Zweck der Prüfung:
Esecuzione della verifica statica del carrello motorizzato/Prüfung eines
Laufwagens (Motor Trolley) für Leuchtenhänger

Data della verifica/Prüfdatum:
10/10/03



Mechanical Properties D Rail							
Span (distance between hanging points)	meters	1	1,5	2	2,5	3	3,5
	feet	3'3"	4'11"	6'6"	8'2"	9'9"	11'6"
Point load	N	5396	3598	2698	2158	1798	1541
	Kg.	550	366	275	219	183	157
	Lbs.	1210	805	605	481.8	402.6	345.4
Deflection With max. point load	mm.	1,5	4,02	7,15	11,1	14,3	17,6
	inch.	0.059	0.158	0.281	0.437	0.563	0.693
Distributed load	N/m	10792	7195	5396	4377	3597	3083
	Kg.	1100	733	550	446	366	314
	Lbs.	2200	1612	1210	981	805	690
Deflection With max. distributed load	mm	2	4,55	8,09	12,6	18,2	24,8
	Inch.	0.08	0.18	0.3	1.3	0.71	0.97

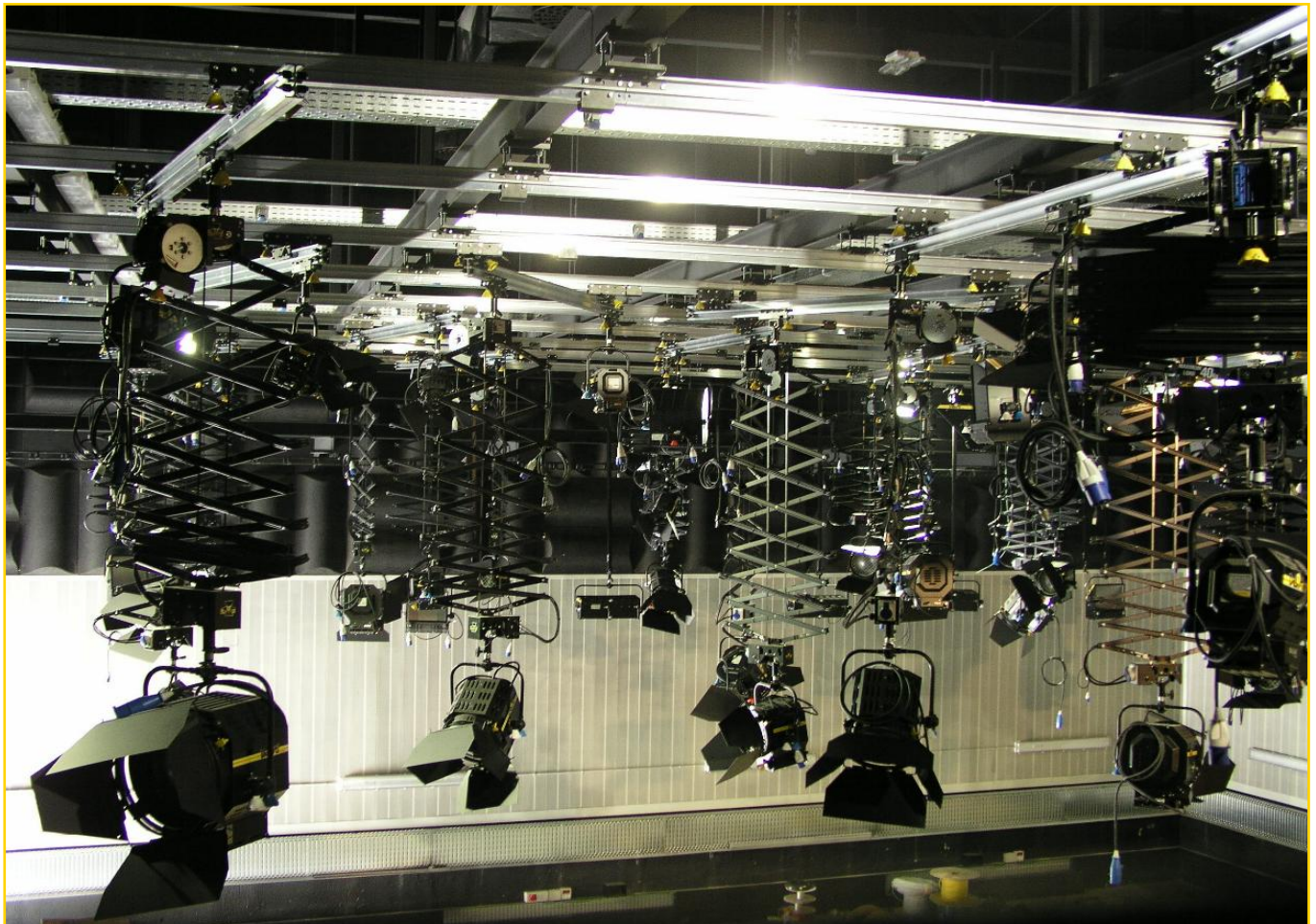
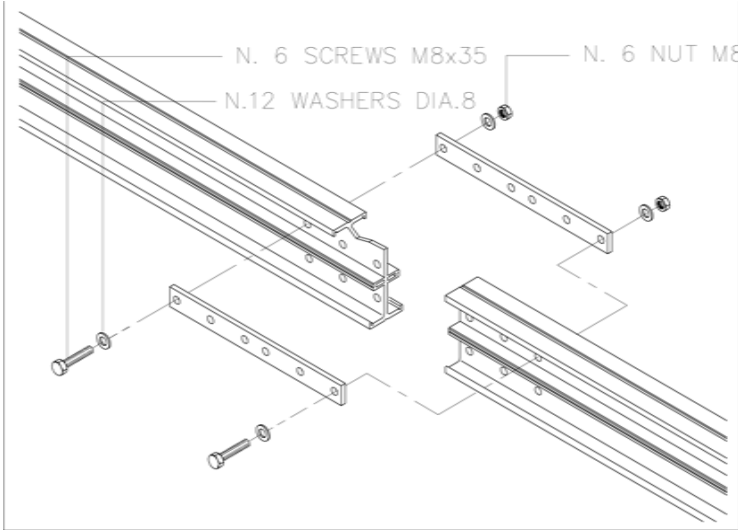
D Rail Trolley with bottom swiveling flange Mod. 8104.100



D Rail Trolley Mod. 8103.110



D Rail Junction 6 Holes Mod. 8202.200



D Rail End-Stop Mod. 8203-100



DETAILED VIEW of
"D" RAIL with BUILT IN
DISTRIBUTION

